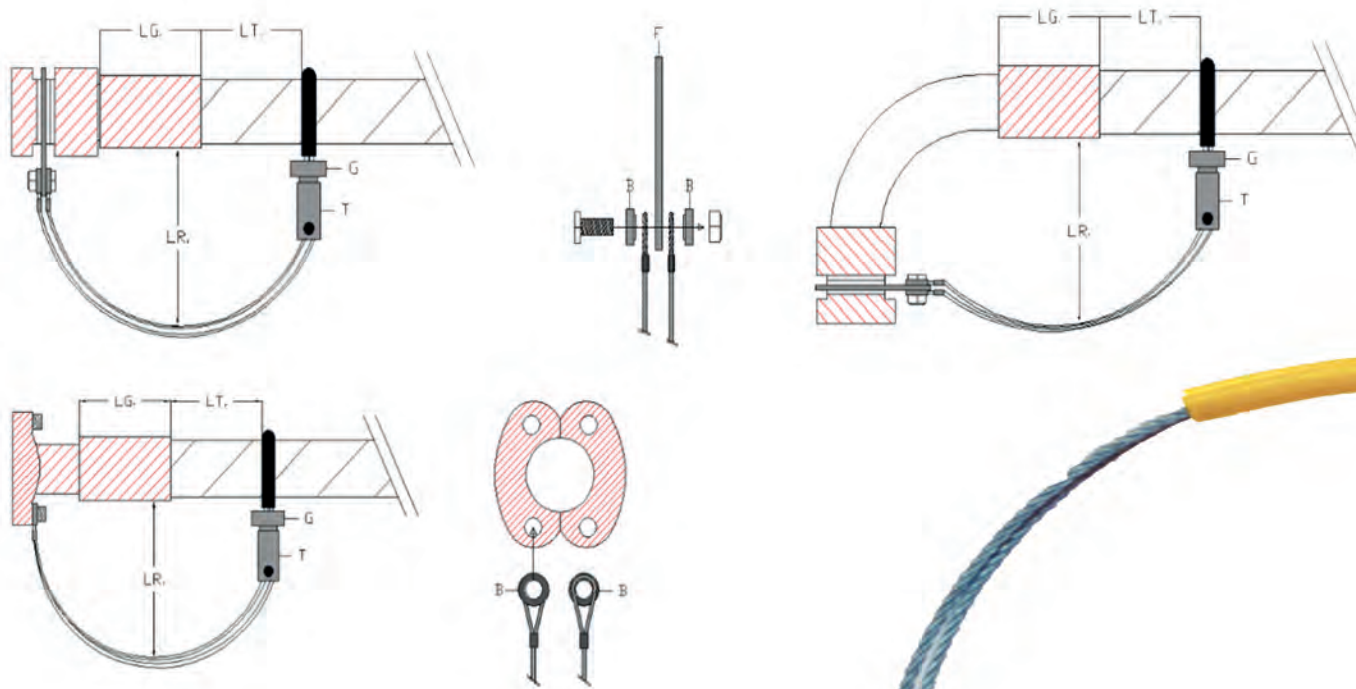
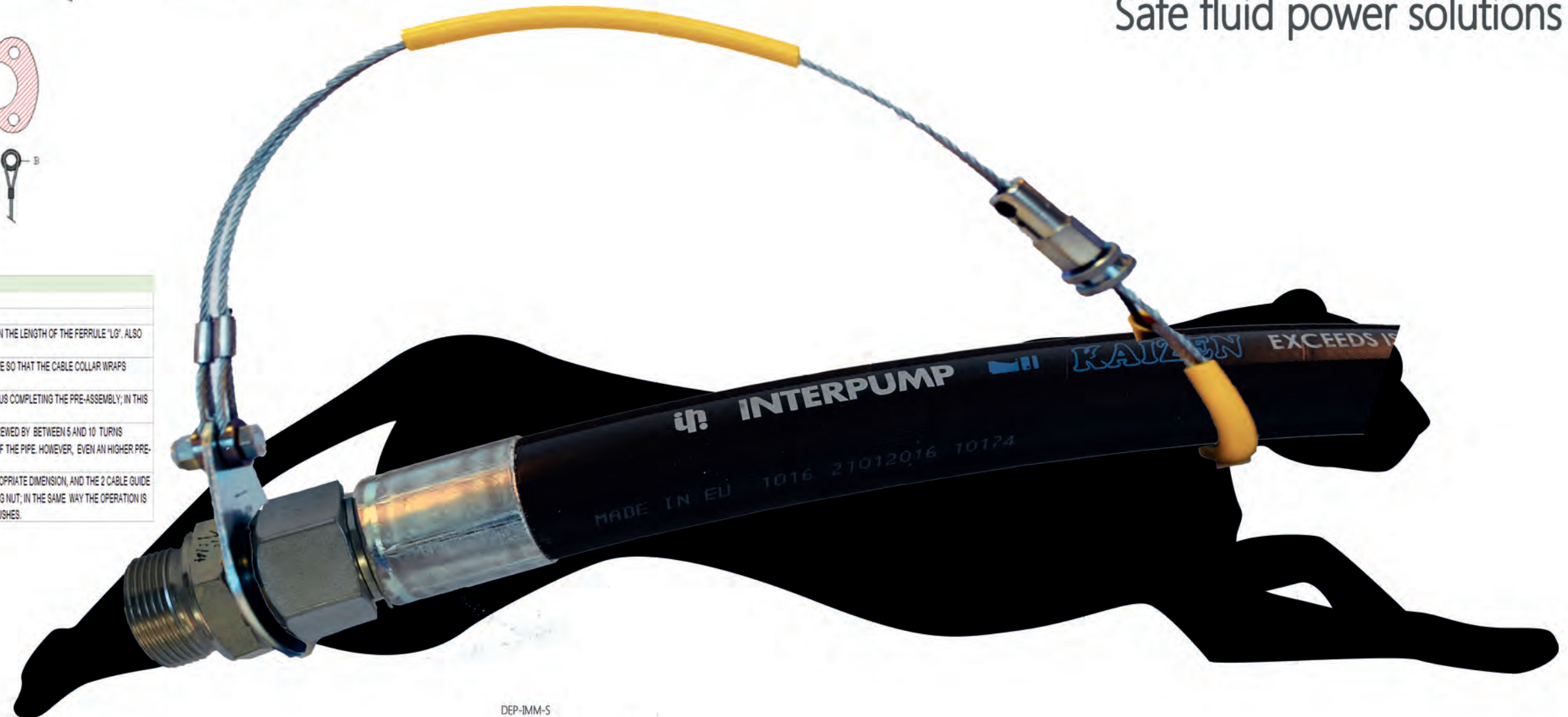


Safety System

Safe fluid power solutions



INTERNATIONAL PATENT PENDING
BASIC APPLICATION NOTES
<ul style="list-style-type: none"> PLACE THE CABLE COLLAR (DYNAMIC SLOT) ON THE PIPE WITHIN A "LT" DISTANCE EQUAL OR HIGHER THAN THE LENGTH OF THE FERRULE "LG". ALSO THE "LR" LENGTH MUST RESULT EQUAL OR HIGHER THAN THE "LG" ONE. PULL IN THE TWO CABLE HEADS AND AT THE SAME TIME BRING THE TURNBUCKLE "T" CLOSER TO THE PIPE SO THAT THE CABLE COLLAR WRAPS CLOSELY AROUND IT (MANUAL OPERATION); TIGHTEN THE CABLE BLOCKING DEVICE UNTIL END STOP. UNSCREW THE FERRULE "G" OF THE TURNBUCKLE "T" UNTIL THE CABLE COLLAR IS FIRMLY ADHERING THUS COMPLETING THE PRE-ASSEMBLY; IN THIS SITUATION THE DEVICE MUST RESULT DIFFICULT TO MOVE LONGITUDINALLY ON THE HOSE. IF THE PREVIOUS STEPS HAVE BEEN ACCURATELY PERFORMED, THE "G" FERRULE MUST RESULT UNSCREWED BY BETWEEN 6 AND 10 TURNS EQUIVALENT TO APPROXIMATELY 5-10 mm STROKE, VARIABLE JUSTIFIED BY THE DIFFERENT DIMENSIONINGS OF THE PIPE. HOWEVER, EVEN AN HIGHER PRE-LOAD DOES NOT COMPROMISE THE GOOD FUNCTIONALITY OF THE SYSTEM. THE CONNECTION TO THE NIPPLE/MACHINE CONNECTOR IS PERFORMED USING THE FLANGE "F" OF APPROPRIATE DIMENSION, AND THE 2 CABLE GUIDE BUSHINGS "B" FITTED ON THE SLOTS OF THE CABLE, TIGHTEN ALL USING THE M8 BOLT AND THE SELF-LOCKING NUT; IN THE SAME WAY THE OPERATION IS REPEATED FOR THE CONNECTION TO 1 OR 2 BOLTS OF THE SAE FLANGE USING THE APPROPRIATELY SIZED BUSHES.



Safety System

Safe fluid power solutions



Item Code	Description	Resistance/Kg	Box/Qty	Connection	Mounting Keys	DiamExt pipe Min-Max (mm)	Notes
T125AS1332.5-300-1A	STAINLESS STEEL double-cable rope Z133 D. 2.5 mm L=300mm-SLOT D.+SLOT	800	10		Allen key 3	14-25	
TZ45AS1333-350-T12MB	Double-cable rope Z133 D. 3 mm L=350 mm - SLOT D.+T12 MB	1000	10		Allen key 3	36-45	Single piece
TZ35AS1333-350-2A	Double-cable rope Z133 D. 3 mm L=350mm D35 - SLOT D.+SLOT+SLOT	1250	10		Allen key 4	26-35	
TZ45AS1333-350-2A	Double-cable rope Z133 D. 3 mm L=350mm - SLOT D.+SLOT+SLOT	1250	10		Allen key 4	36-45	
TZ65AS1333-400-2A	Double-cable rope Z133 D. 3 mm L=400 mm D65 - SLOT D.+SLOT+SLOT	1250	10		Allen key 4	46-65	
TZ95AS1333-450-2A	Double-cable rope Z133 D. 3 mm L=450 mm D65 SLOT D.+SLOT+SLOT	1250	10		Allen key 4	66-95	
WASHERS FOR SCREWS FOR SAE FLANGES:							
RB19D8	Bush washer for cable D. 19mm - ø8 DIN (Bolt M8 8.8)		10	SAE 3000-6000 1/2			
RB20D10	Bush washer for cable D. 20mm - ø10 (SAE M10)		10	SAE 3000-3/4 - 1" - 1"1/4 - SAE 6000 3/4			
RB22D12	Bush washer for cable D. 22mm - ø12 (SAE M12)		10	SAE 3000 1"1/2 - 2" SAE 6000 1"			
RB26D14	Bush washer for cable D. 26mm - ø14 (SAE M14)		10	SAE 6000 1"1/4			
RB28D16	Bush washer for cable D. 28mm - ø16 (SAE M16)		10	SAE 3000 3" - 3"1/2 e 4" SAE 6000 1"1/4			
RB32D20	Bush washer for cable D. 32mm - ø20 (SAE M20)		10	SAE 6000 2"			
COMPLETE KIT FLANGE WASHER NUT BOLT:							
KFL170	Connection flange DIN - D. 17 mm		10	3/8 BSP - M16			T125AS1332.5-300-1A
KFL185	Connection flange DIN - D. 18,5 mm		10	M18 - UN 11/16			T125AS1332.5-300-1A
KFL205	Connection flange DIN - D. 20,5 mm		10	M20 - UNF 3/4			T125AS1332.5-300-1A
KFL225	Connection flange DIN - D. 22,5 mm		10	1/2 BSP - M22 - 7/8 UNF			
KFL335	Connection flange DIN - D. 33,5 mm		10	BSP 3/4 1" - M26 - M30 - UN 1"1/6 1"3/16 1"5/16			
KFL365	Connection flange DIN - D. 36,5 mm		10	BSP 1" - M36 - UN 1"7/16			
KFL425	Connection flange DIN - D. 42,5 mm		10	BSP 1"1/4 - M42 - M38 - UN1"7/16			
KFL455	Connection flange DIN - D. 45,5 mm		10	M45 - UN 1"11/16			
KFL490	Connection flange DIN - D. 49 mm		10	BSP 1"1/2 UN 1"7/8			
KFL520	Connection flange DIN - D. 52 mm		10	M52 - UN 2"			
KFL600	Connection flange DIN - D. 60 mm		10	BSP 2"			
High Resistance							
TZ45AS1333-350-T12MB-AR	Double-cable rope Z133 D.3 mm L=350 mm-ASOLA D.+T12 MB-2160N	1300	10		Allen key 3	36-45	Single piece
TZ35AS1333-350-2A-AR	Double-cable rope Z133 D. 3 mm L=350mm D35 - SLOT D.+SLOT+SLOT-2160N	1550	10		Allen key 4	26-35	
TZ45AS1333-350-2A/AR	Double-cable rope Z133 D. 3 mm L=350mm D45- SLOT D.+SLOT+SLOT-2160N	1550	10		Allen key 4	36-45	
TZ65AS1333-400-2A/AR	Double-cable rope Z133 D. 3 mm L=400 mm - D65 SLOT D.+SLOT+SLOT-2160N	1550	10		Allen key 4	46-65	
TZ95AS1333-450-2A/AR	Double-cable rope Z133 D. 3 mm L=450 mm D 95 SLOT D.+SLOT+SLOT-2160N	1550	10		Allen key 4	66-95	
WASHERS FOR SCREWS FOR SAE FLANGES:							
RB19D8	Bush washer for cable D. 19mm - ø8 DIN (Bolt M8 8.8)		10	SAE 3000-6000 1/2			
RB20D10	Bush washer for cable D. 20mm - ø10 (SAE M10)		10	SAE 3000-3/4 - 1" - 1"1/4 - SAE 6000 3/4			
RB22D12	Bush washer for cable D. 22mm - ø12 (SAE M12)		10	SAE 3000 1"1/2 - 2" SAE 6000 1"			
RB26D14	Bush washer for cable D. 26mm - ø14 (SAE M14)		10	SAE 6000 1"1/4			
RB28D16	Bush washer for cable D. 28mm - ø16 (SAE M16)		10	SAE 3000 3" - 3"1/2 e 4" SAE 6000 1"1/4			
RB32D20	Bush washer for cable D. 32mm - ø20 (SAE M20)		10	SAE 6000 2"			
COMPLETE KIT FLANGE WASHER NUT BOLT:							
KFL170	Connection flange DIN - D. 17 mm		10	3/8 BSP - M16			
KFL185	Connection flange DIN - D. 18,5 mm		10	M18 - UN 11/16			
KFL205	Connection flange DIN - D. 20,5 mm		10	M20 - UNF 3/4			
KFL225	Connection flange DIN - D. 22,5 mm		10	1/2 BSP - M22 - 7/8 UNF			
KFL335	Connection flange DIN - D. 33,5 mm		10	BSP 3/4 1" - M26 - M30 - UN 1"1/6 1"3/16 1"5/16			
KFL365	Connection flange DIN - D. 36,5 mm		10	BSP 1" - M36 - UN 1"7/16			
KFL425	Connection flange DIN - D. 42,5 mm		10	BSP 1"1/4 - M42 - M38 - UN1"7/16			
KFL455	Connection flange DIN - D. 45,5 mm		10	M45 - UN 1"11/16			
KFL490	Connection flange DIN - D. 49 mm		10	BSP 1"1/2 UN 1"7/8			
KFL520	Connection flange DIN - D. 52 mm		10	M52 - UN 2"			
KFL600	Connection flange DIN - D. 60 mm		10	BSP 2"			



filmati inerenti il montaggio e l'uso dei nostri prodotti su youtube.com
<https://www.youtube.com/user/immhydraulics>



link assistant video tutorial
 step by step guide to show you all the features of this safety product

